

**EXELIS**

# LCR-2020 Coastal Surveillance Radar

All Weather, All Threats, All the Time



# LCR-2020 Coastal Surveillance Radar

## All Weather, All Threats, All the Time

As threats are becoming more sophisticated, conducting effective coastal surveillance is increasingly difficult.

Exelis latest generation of Coastal Surveillance radars, the LCR-2020 product line, stands alone as the coastal surveillance/gapfiller radar solution.

### ALL WEATHER

The LCR-2020 radar system provides total situational awareness in the harshest of coastal marine environments, including severe ground and sea clutter, heavy rain, fog, and jamming. Furthermore, the system can be configured to utilize different frequency band subsets on an azimuth-sectored basis, and thereby maximize flexibility for site installation. These capabilities are part of the LCR-2020's advanced frequency management system.

### ALL THREATS

The LCR-2020's dual beam antenna provides maximum detection and tracking of a wide range of airborne and surface threats. Frequency agility and Electronic Counter Countermeasures (ECCM) enables maximum protection against a wide range of active and passive jamming threats in all mission environments.

### ALL THE TIME

Highly reliable, the LCR-2020 maximizes availability and minimizes operations and maintenance costs through proven, autonomous, remote operation in severe coastal environments with minimum on-site maintenance.

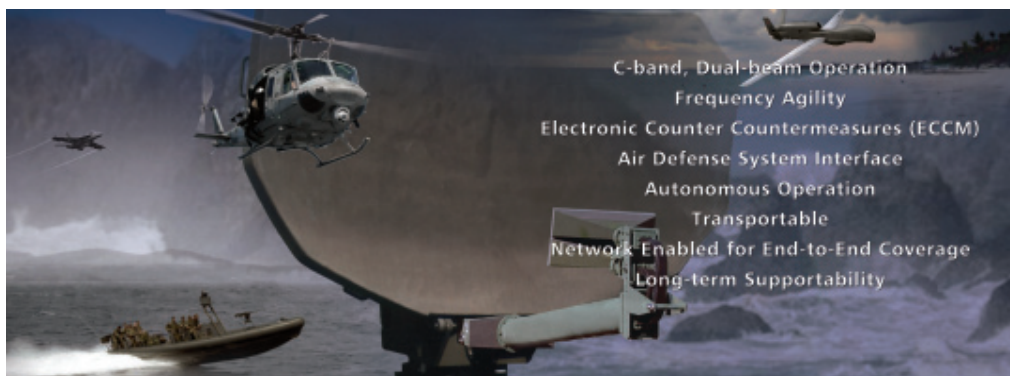
### INTEROPERABILITY

Modular, open-architecture flexibility enables operations as a stand-alone radar system, a networked radar system for an end-to-end, comprehensive coastal surveillance sea-air picture, or integration into an existing or future air defense network..

### AUTOMATIC SECTORIZED OPERATION

To ensure optimal performance in mixed environments, the LCR-2020 provides automatic sectorized operation in azimuth among different modes: sea, long-range air, and long-range land.

This feature is ideal for littoral environments with waterways, peninsulas, and inlets to maintain both air and sea surveillance.



## SPECIFICATIONS

Characteristics	Coverage
Operating Frequency	C-Band/NATO G-Band
Update Rate	10 seconds
Track Cued Modes	Frequency Diversity Gate
Instrumented Range	100, 150, 185 km
Ceiling	9 km
Elevation	25°

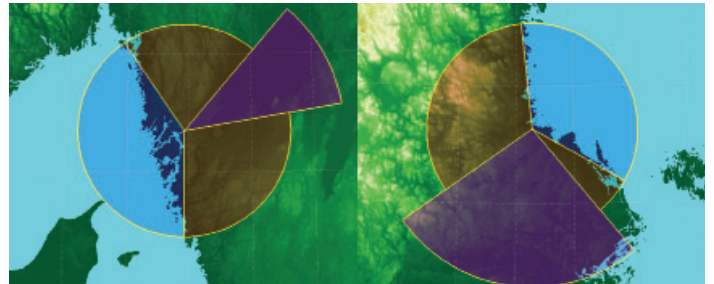
### MOBILITY OPTIONS FOR CONOPS FLEXIBILITY

The LCR-2020's installation options maximize deployability to support a wide variety of coastal surveillance and air defense surveillance missions:

- > Fixed – Installed at a fixed-site facility
- > Transportable – ISO shelter configuration for rapid deployment
- > Fully Mobile – Mounted on a truck, trailer, or other suitable vehicle

### PROVEN PERFORMANCE

- > Continuing our 30 year legacy of LCR Coastal Surveillance Radars worldwide
- > Over 40 systems delivered and in-service today
- > Supports both Air Force and Naval missions
- > Guaranteed spares and support for a minimum of 20 years



Automatic Sectorized Operation: Ensures Optimal Performance in Mixed Environment

Exelis Inc.  
7821 Orion Avenue  
Van Nuys, CA 91406  
U.S.A.  
Ph #: 818 901 2491  
www.exelisinc.com

## EXELIS

Exelis is a registered trademark and "The Power of Ingenuity" is a trademark, both of Exelis Inc. Copyright © 2013 Exelis Inc. All rights reserved.

Copyright © 2013 Exelis Inc.  
BD739 LCR2020 coastal brochure exelis,  
Approved for Public Release Copyright,  
Exelis 2013