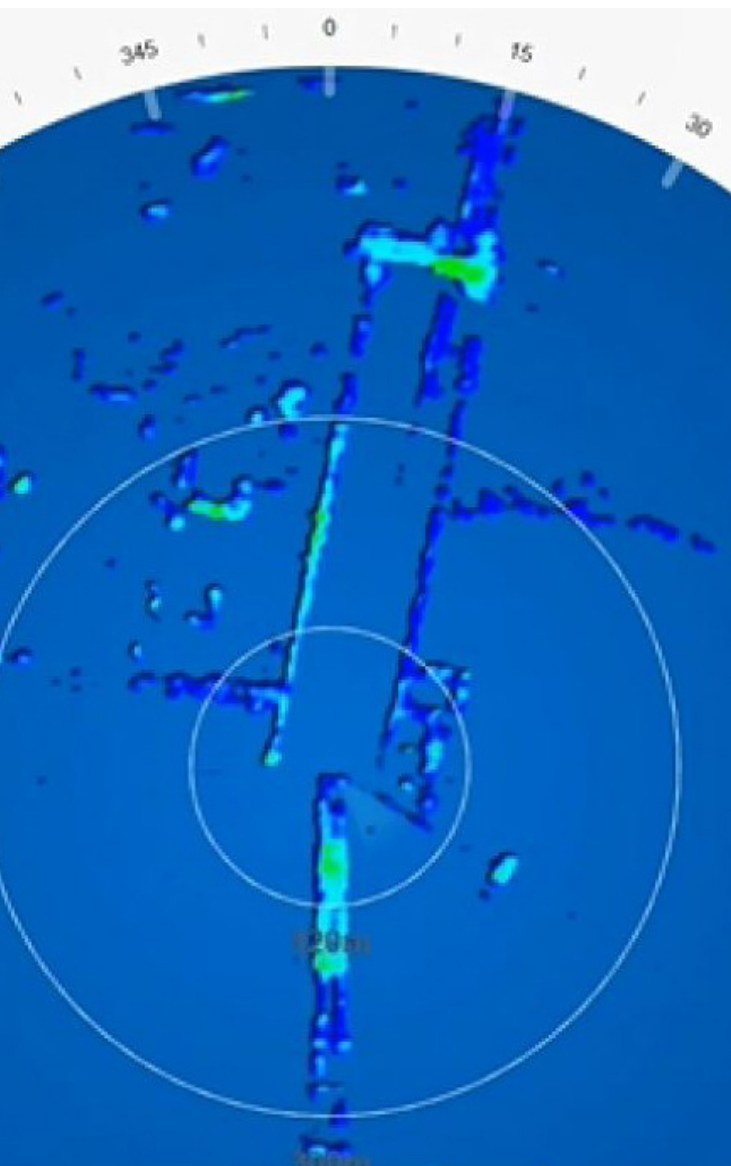


Wärtsilä RS24

High resolution short range radar



The RS24 sensor provided by Guidance Marine is a high speed, high resolution FMCW K-band dome radar. K-band (24GHz) radar has an inherently higher resolution than the S or X bands more typically used for marine radar. It can output radar images both to the RS24 Dashboard and also to third party applications which support the ASTERIX CAT-240 open data format. It is designed to provide high levels of situational awareness in densely populated marine environments.



Benefits

- High resolution situational awareness
- Navigate with greater precision through busy waterways
- Safer manoeuvring in harbours, fjords and locks
- Identify and locate small crafts or navigation buoys
- No radar blind spot
- 60 RPM

Its short range capability makes it the premier choice radar for situational awareness and hazard detection. It can output radar images both to the RS24 Dashboard and also to third party applications which support the ASTERIX CAT-240 open data format.



Main data

Sensor Details

Rotation	≤ 60rpm
Power	85-264VAC 1A RMS
Control Interface	Ethernet 100Base-T
Image Format	ASTERIX
Operating Temperature	-25°C to +55°C
Ingress Protection	IPX6
SOLAS	System not certified for compliance with IMO SOLAS Ch. V

Radio Frequency Details

Transceiver Type	Ultra-Linear FMCW
Frequency Band	K-band ISM 24.05-24.25GHz
Transmit Power Nominal	100mW EIRP
Azimuth Beam Width	≤ 1.4° (-3dB width)
Elevation Beam Width	25° (12.5° up and 12.5° down)
Azimuth Side Lobe Suppression (System to two way)	Inside ±10° ≥ 25dB
	Outside ±10° ≥ 40dB
Minimum Range	1m
Maximum Range (dependent upon size of target)	1500m
Range Resolution	75cm
Bearing Resolution	1.44°

Sensor Certification

EMC	EN IEC 60945:2002
Safety	
Environmental	
Equipment Marking	CE

Sensor Weight & Dimensions

Diameter	500mm
Height	400mm
Weight	21kg

[wartsila.com/marine/build/dynamic-positioning/rs24](https://www.wartsila.com/marine/build/dynamic-positioning/rs24)
sales.wgm@wartsila.com

WÄRTSILÄ® is a registered trademark. Copyright © 2020 Wärtsilä Corporation.
Specifications are subject to change without prior notice.

