

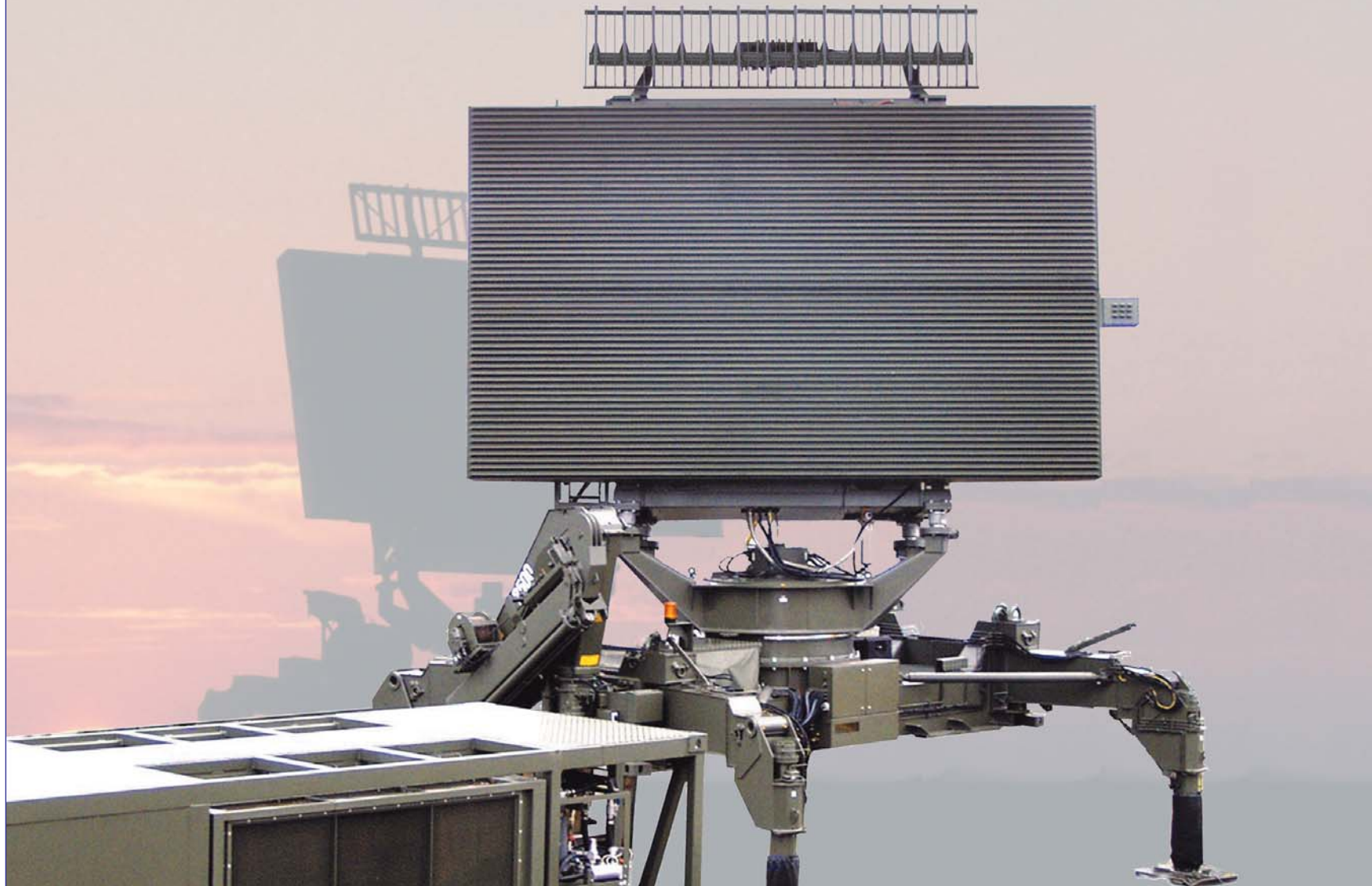
# MASTER-M LONG RANGE INFRASTRUCTURE 3D SURVEILLANCE RADAR

EXTENDED AIR DEFENSE  
MISSIONS

AIR COMMAND AND  
CONTROL MISSIONS

BATTLEFIELD  
SURVEILLANCE  
AND COORDINATION  
MISSIONS

COMBINED  
COMMAND AND  
CONTROL MISSIONS



  
**ThalesRaytheonSystems**

# MASTER-M LONG RANGE INFRASTRUCTURE 3D SURVEILLANCE RADAR

## Description:

### Far-reaching

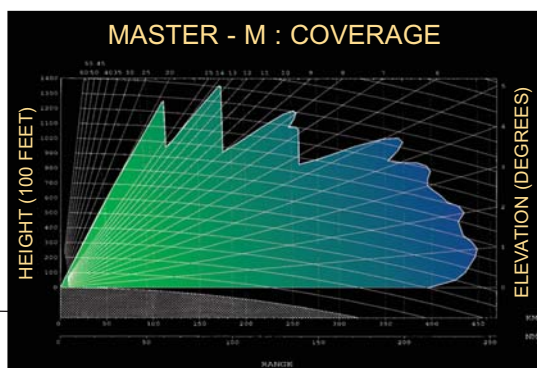
Safeguarding airspace sovereignty requires a ground infrastructure that no enemy can penetrate. For a timely response, a threat needs to be detected well in advance. With its extended range capability, the Master-M 3D radar is specially designed to meet infrastructure requirements.

### Far-sighted

In a world where threats are constantly evolving and growing more complex, radar systems must be designed to adapt to new requirements throughout their 20-years-plus lifetime. The Master radar are designed under the Pre-Planned Product improvement (P3I) concept. New add-on equipment and options can be procured progressively, thus guaranteeing effectiveness throughout the system's life cycle.

### Master-M, the cornerstone of your air defense

Available in both fixed and mobile configurations, Master-M is a particularly versatile product, designed to be equally successful for backbone infrastructure as for force projection operations. Sharing a common core of standard hardware, software and tooling with all the members of the Master radar family, Master-M combines top-quality performances with low life-cycle costs.



## Features:

- S (I-J) band
- Large operating bandwidth: 400 MHz
- Fully solid-state transmitter
- Transmission of plots and/or tracks to remote centers
- Accommodates all kinds of protocols and formatted messages

## Operational use

- Unattended
- Stand-alone within co-located C2 facility
- Backbone infrastructure integrated in an Air Command and Control network

## Detection envelope

- Instrumented range: 470 km
- Ceiling: 100,000 ft
- Elevation coverage: 20°

## Accuracy/Discrimination on combat aircraft

- Range: 30 m/200 m
- Azimuth: 0.3°/3°
- Height: 1,500 ft at 100 Nm

## IFF System

- Co-mounted secondary antenna
- Modes: 1, 2, 3/A, C, Secure
- Fully solid state

## Transportability (land, sea and air)

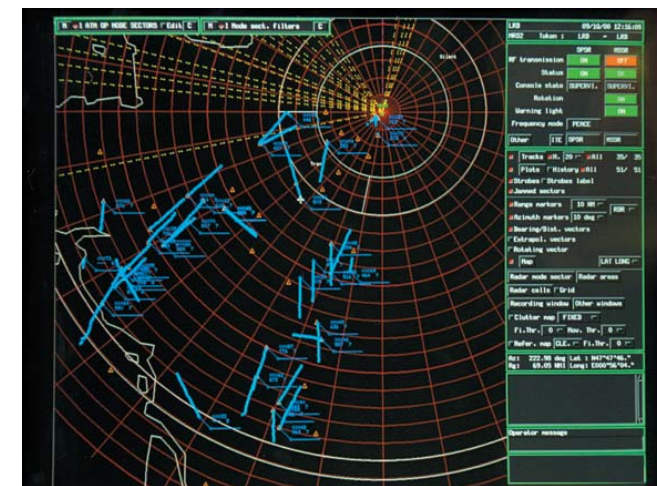
- Four 20-foot ISO compatible containers and one 20-foot ISO platform
- Four 10-ton trucks + one 20-ton trailer
- Aircraft (C-130 type)

## Deployment

- Assembly/disassembly: 2 hours/10 people

## Miscellaneous

- MTBCF > 1,500 hours
- Availability > 99.9%



**ThalesRaytheonSystems**  
1801 Hughes Drive  
P.O. Box 34055  
Fullerton, California  
92834 - 9455 USA  
Tel.: +1.714 446 3118  
Fax: +1.714 446 3260

**ThalesRaytheonSystems**  
1, avenue Carnot  
91883 Massy Cedex France  
Tel.: +33 (0)1 69 75 50 00  
Fax: +33 (0)1 69 75 51 00