



PRIMARY SURVEILLANCE RADAR FOR AIR TRAFFIC CONTROL

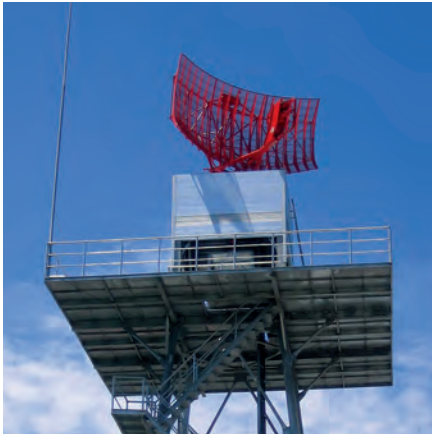
- ▶ More than 120 worldwide operational references
- ▶ 60 / 80 / 100 NM detection range capabilities
- ▶ Close detection from radar head
- ▶ Solid-state design using the latest technology
- ▶ Low cost of ownership
- ▶ Short term delivery
- ▶ Stand-alone or co-mounted with a secondary RSM970S Mode S radar
- ▶ Windfarms: dedicated impact studies and implementation of optimal mitigation, among a large panel of solutions
- ▶ 4G interferences remediation solution
- ▶ In option, altimetry assessment

AEROSPACE

STAR 2000

S-band solid-state approach Radar





AEROSPACE

STAR 2000

S-band solid-state approach Radar

CHARACTERISTICS

OPERATIONAL FUNCTIONS

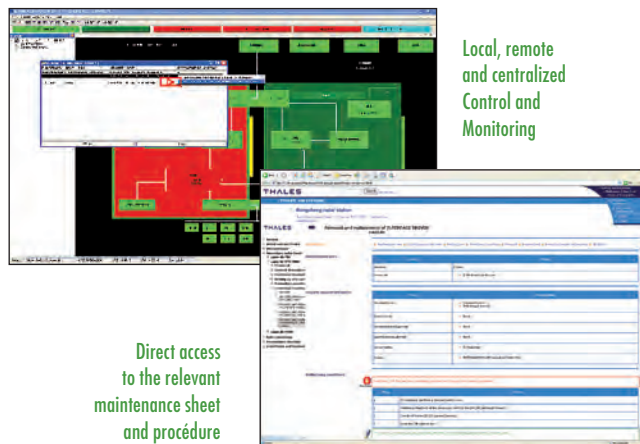
- Primary Surveillance Radar for approach and extended approach control area
- Optional weather channel providing 2 or 6-level weather maps

EASE OF MAINTENANCE

- Comprehensive embedded BITE
- Local / remote diagnosis capabilities
- Transmitter power-on maintenance with on-line replaceable modules
- No analogue inherent adjustments
- Limited number of LRU types



ADVANCED MAINTENANCE TOOLS



Local, remote and centralized Control and Monitoring

Direct access to the relevant maintenance sheet and procedure

SAFETY

- High integrity and availability of data provided to the controller
- Fail-safe capability
- SRG, CAP 670 approval

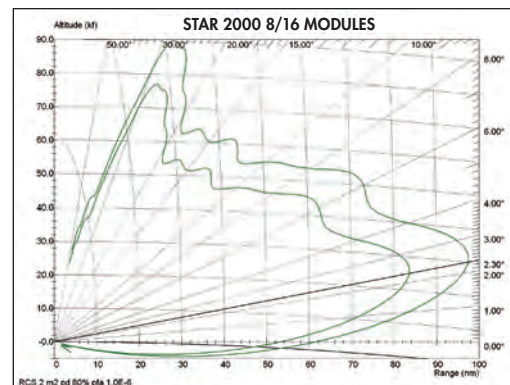
TECHNICAL CHARACTERISTICS

- Fault tolerant solid-state transmitter with 8 or 16 power modules
- Power modules equipped with individual & independent cooling
- Digital frequency selection per 1 MHz step
- Digital Phase-Amplitude Detection receiver
- Advanced Signal Processing Algorithms running on COTS PC Linux
- On-line system performance monitoring
- Serial line/ Ethernet UDP/TCP IP outputs

BASIC SYSTEM PARAMETERS

Frequency	2700 to 2900 MHz
Minimum range	0.25 NM
Instrumented range	60/80/100 NM
Rotation rate	15/12/10 rpm
Polarization	Linear/circular
System stability	> 65 dB
MTBCF	> 40,000 hours
MTTR	< 24 min.
Inherent Availability	99.999 %

VERTICAL COVERAGE DIAGRAM



AUSTRALIA

Thales Australia Limited
The Thales Australia Centre
WTC Northbank Wharf
Melbourne, VIC 3005
Tel. +61 (0)3 8630 4000

FRANCE

Thales Air Systems SAS
3, avenue Charles Lindbergh
BP 20351
94628 Rungis cedex
Tel. +33 (0)1 79 61 40 00

GERMANY

Thales Electronic Systems
GmbH
Lilienthalstrasse 2
70825 Korntal-Münchingen
Tel. +49 (0)7 11 86 03 20

ITALY

Thales Italia S.p.A.
Via E. Mattei, No.1
20064 Gorgonzola (MI)
Tel. +39 02 950 951

UNITED KINGDOM

Thales ATM Limited
Minerva building,
Manor Royal
Crawley, West Sussex RH10 9HA
Tel. +44 208 391 – 6277

USA

Thales ATM
10950 El Monte Street,
Suite 110
Overland Park, KS 66211
Tel. +1 913 422 2600

For more information: marketingatm@thalesgroup.com